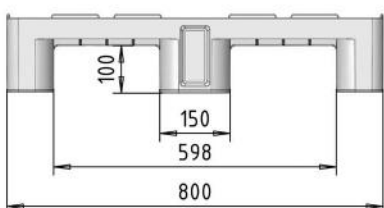
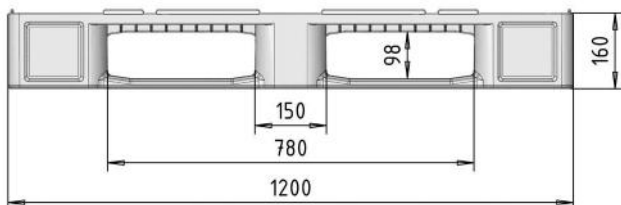


H1 TYPE

1200 X 800 | 3 RUNNERS | OPEN DECK

MADE FROM VIRGIN MATERIAL



TECHNICAL DATA

Measures (mm)	1200 x 800 x 160
Weight (kg +/- 1%)	18
Material	Virgin HDPE
Static load* (kg)	4800
Dynamic load** (kg)	1200
Load in rack*** (kg)	1000

CHARACTERISTICS

Standard color	Light grey
Lip (mm)	8
Temperature range (°C)	-40 to +70

OPTIONS

No lip / Central locator blocks / Special color / RFID / Unwelded runners

PACKAGING

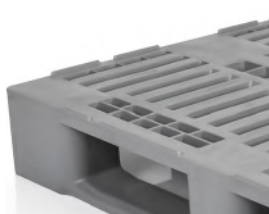
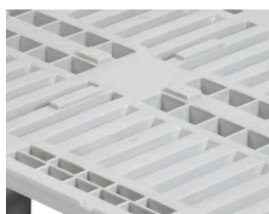
(indicative values)

Packaging unit (pcs)	16
Bulk size (mm)	1200 x 800 x 2585
Truck (pcs)	528

PERSONALIZED MARKING

(consult conditions)

Silkscreen printing / Heat stamped / Mold engraving



* **Static load:** Uniformly distributed load which the pallet can support when placed on a flat, horizontal rigid surface, at a temperature of approximately 20°C.

** **Dynamic load:** Uniformly distributed load which the pallet can support when transported or manoeuvred on a conventional forklift or pallet truck, at a temperature of approximately 20°C.

*** **Load in rack:** Uniformly distributed load, with E2 crates, which the pallet can support when resting on the skids on its short side on a standard rack, at a temperature of approximately 20°C.

The indicated values are approximate and based on experience and practical cases. Any deterioration or different loading, temperature or storage method conditions, can cause this data to vary.

We reserve the right to modify any information provided herein without prior notice.

We recommend testing the pallet before use.